

Impact the World as Global Human Resources in the Field of Food and Agriculture

Global Agri-Nutrition Leaders Program



TOKYO UNIVERSITY OF
AGRICULTURE

Project-Based Collaborative Education Program on Nutrition Improvement in Africa

This project aims to foster next-generation leaders capable of contributing to the improvement of food and nutrition in Africa through vigorous bidirectional student exchanges between Tokyo University of Agriculture (Tokyo NODAI) and its African partner universities. Strengthening the cooperation with its partner universities, Tokyo NODAI will provide both African and Japanese

students with the opportunities to participate in practical educational programs, study the latest agricultural and nutritional science, and discuss related issues with students gathered from different countries and regions. This project is supported by the Ministry of Education, Culture, Sports, Science and Technology (MEXT) as part of "Inter-University Exchange Project"

Duration Period	from December 2020 to March 2025
Member Universities	Tokyo University of Agriculture (Tokyo NODAI) / Japan Sokoine University of Agriculture (SUA) / Tanzania Jomo Kenyatta University of Agriculture and Technology(JKUAT) / Kenya

Becoming Global Human Resources in Food and Agriculture

1

Problem-Solving Skills

Ability to acknowledge and analyze food- and agriculture-related issues from different perspectives and devise solutions.

2

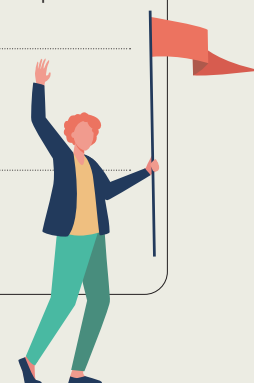
Communication Skills

Ability to effectively communicate with people from diverse backgrounds.

3

Leadership

Ability to take actions for sustainable development from local and global perspectives.



What can I learn from the exchange program in Japan?



Knowledge about advanced technologies in agriculture and nutrition in Japan.

Opportunities to meet and interact with other students from all around the world.

Experiences of Japanese culture and language

Program Flow



Kenya/Tanzania

Japan

Member Universities >>>



01. Online Exchanges

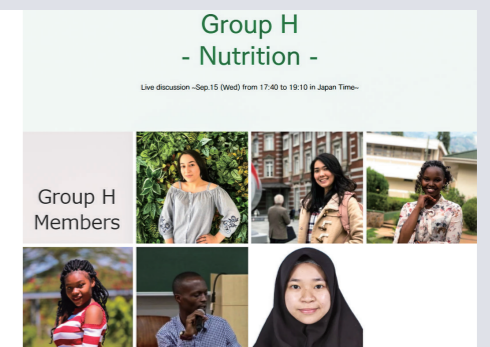
Complementary online sessions are available for anyone who would like to learn more about Japan. Participants can interact with students from Tokyo NODAI.



02. Short-Term Program

Our Short Term Program includes "Collaborative Learning Program" besides its special contents exclusively designed for the participants from African countries.

The special program will cover diversified subjects which polish your insight, awareness, knowledge and skills. These experience may be applicable upon tackling the issues on Food, Agriculture and Nutrition on your own environment.



Collaborative Learning Program (CLP)

Collaborative Learning Program (CLP) consists of two short-term programs: the International Students Summit on Food, Agriculture and Environment (ISS) and the Comprehensive International Education Program (CIEP). Participating in the ISS and CIEP, students will acquire communication skills and make connections with students from different backgrounds through sharing their knowledges and experiences.

CLP is the core of the short-term program, and students in the long-term program will also be encouraged to participate in CLP. Upon successful completion of the program, students will be awarded credits (2 credits for ISS, 4 credits for CIEP) along with the certificates.

At the ISS, representative students selected from each university will make presentations on initiatives related to food, agriculture, and the environment that can only be undertaken by university students from their unique perspective.

The CIEP is a one-week program, which includes classroom lectures, hands-on agricultural trainings, workshops and group presentations in English.

Standard Schedule for CIEP

- DAY1 : Orientation / Practical Experience
- DAY2 : Practical Experience
- DAY3 : Practical Experience
- DAY4 : Field Trip
- DAY5 : Lectures, Group Work
- DAY6 : Lectures, Group Work
- DAY7 : Workshops, Presentations
- DAY8 : Student-Exchange

Standard Schedule for ISS

- DAY1 : Field Trip
- DAY2 : Orientation / Advisor Lectures
- DAY3 : Parallel sessions / Group discussion
- DAY4 : Parallel sessions / Group discussion
- DAY5 : Preparation day for Overall session
- DAY6 : AM: Rehearsal /
PM: Overall session followed by networking reception
- DAY7 : Student-Exchange

03. Long-Term Exchange Program

Our Long-Term Exchange program of 6 to 12 months offers opportunities for international students with high academic motivation to take specialized courses in English and belong to a laboratory to gain practical experience.



The students participating under this program will

- be offered a round-trip international air ticket, waived school and tuition fees, and free of charge student dormitory.
- be beneficiary of the "Student Exchange Support Program" scholarship of the "Japan Students Support Organization (JASSO)," if the students meet the designated criteria. (Monthly stipend: 80,000 JPY)

Student Exchange Support Program, JASSO

https://www.jasso.go.jp/en/study_j/scholarships/short_term.html

Let's use the knowledge and skills acquired in this program to make a difference in the world!!



Tokyo University of Agriculture (Tokyo NODAI) was founded in 1891 from the Tokugawa Ikueiko School, as its forerunner, which was devoted exclusively to agriculture. Based upon our educational principle of "returning students to the farm" and fostering human resources for entry into the business community in addition to the university's core field of "Agriculture" with its 130-year history, the institution has now evolved into a comprehensive agricultural university perfectly positioned to solve a wide range of issues related to food, environment, health and biomass energy. These issues are addressed through our 6 graduate schools of Agriculture, Applied Bioscience, Life Sciences, Agro-Environmental Science, International Food and Agricultural Studies and Bioindustry constituting 23 departments on our three campuses which cover a vast geographical region extending from subtropical (South) to temperate (North) climate conditions. Thus, Tokyo NODAI offers a unique education and research environment to address humankind problems both locally and globally. Our Miyako subtropical, Fuji, Isehara and Abashiri farms and Okutama Practice Forest and Marine Research are meant to fulfill our mission. In addition to the above statement, Tokyo NODAI closely works with more than 40 universities from 30 countries distributed on all continents to address global issues through partnerships.

Mission Statement

Tokyo NODAI continues to challenge the new "Practical Science" for sustainable development of mankind and the earth through research and education on Food, Environment, Health and Natural Resources and Energy. Tokyo NODAI mission breaks down as follows:

- Taking over the fundamental principle, we challenge the cutting-edge in scientific fields, such as high technology, microbes and mystery of animate life by the new "Practical Science".
- Creation of well-balanced sustainable society based on the symbiosis of nature, environment and region.
- Fostering all-round individuals through integration of inductive approach (emphasis on experiment) and deductive approach (emphasis on creativity - using one's own brain).

Tokyo NODAI <https://www.nodai.ac.jp/english/>

Inquiries about exchange programs

Sokoine University of Agriculture

Justus Nsenga (Coordinator): nsenga@sua.ac.tz

Jomo Kenyatta University of Agriculture and Technology

Elijah Ateka (Coordinator): eateka@agr.jkuat.ac.ke

Naomi Chelimo: naomichelimo@jkuat.ac.ke

Please refer to the following websites for more details

Global Agri-Nutrition Leaders Program

<http://tenkai.nodai.ac.jp>

Student Life in Tokyo NODAI

<https://www.nodai.ac.jp/english/ip/student-life-tokyo-nodai/>

International Student's Handbook

https://www.nodai.ac.jp/application/files/4715/8752/9993/International_Students_Handbook.pdf

Listen to the Voices from International Students at Tokyo NODAI

<https://www.nodai.ac.jp/english/ip/voices-international-students/>